

OPERATING MANUAL TUSKER SERIES



FEATURES

Tusker-10,11,22,44, Nxt & Eco-BB- 77
Color- Grey



Password



LCD Display

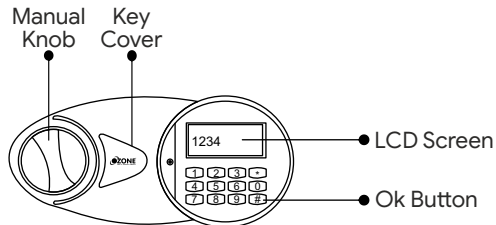


Emergency Key

Please scan the QR code for reference video

OPERATING INSTRUCTIONS FOR TUSKER SAFE

Ozone Tusker safe is designed to help you protect your valuables against theft. Please install the safe in a cupboard or on a wall/floor and keep the emergency key in a safe place. Keep the safe in a secret place for paramount security.



Accessories Include:

- 1) 2 Keys
- 2) 4 Mounting Bolts
- 3) 4x1.5 Voltage AA Batteries
- 4) Floor Carpet
- 5) Power Supply Adaptor
- 6) Warranty Card

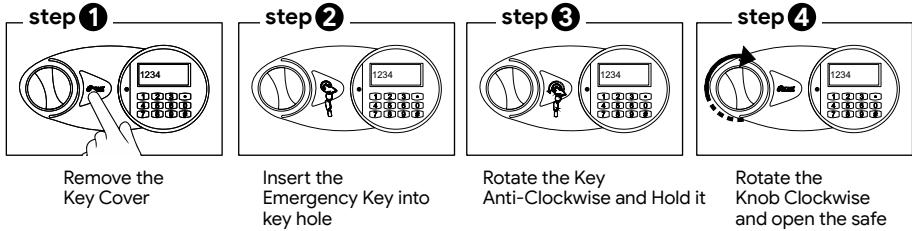
Specifications:

Model	External Size (HxWxD)mm	Weight (Kg.)	Volume (Ltr.)
Tusker-10	200x350x200	5.9	9.2
Tusker-11	250x350x250	9.5	16
Tusker-22	200x430x380	11	30
Tusker-44	350x450x355	21	44
Tusker-Nxt	250x455x375	12.3	34.94
ECO-BB-77	650x440x440	34.7	95.4

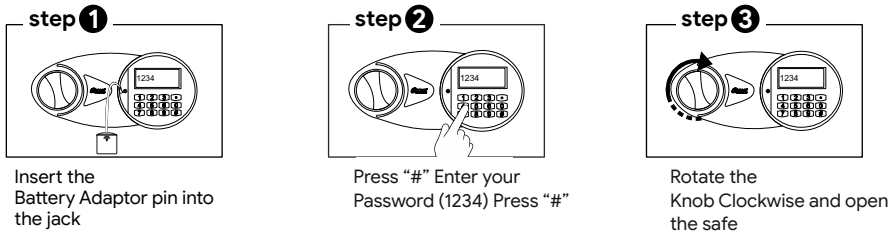
NOTE: 1) Kindly change the User and Master Password before operating the Digital Safe
2) Please do not keep the Emergency Keys inside the safe!.

HOW TO OPEN A SAFE FOR THE FIRST TIME

1. OPEN THE SAFE USING THE EMERGENCY KEY



2. BY USING EXTERNAL BATTERY ADAPTER

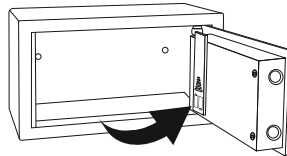


INSTALLING THE BATTERIES

Open the safe door, remove the battery case cover and insert new AA batteries (4x1.5V) according to '+' '-' polarity.

Low Battery Indication - If the red indication blinks in that condition we need to change the batteries.

NOTE: In case of battery drain, please replace all the existing batteries with new ones.



HOW TO CHANGE THE USER PASSWORD

Existing user password is (1234).

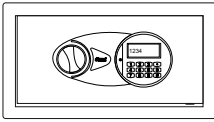
Safe door must be in open position, press the reset button given behind the door. Enter your new user password (3-8 digits) and press “#” button to confirm, the display screen show “IN”, which means the new password has been changed successfully.

HOW TO CHANGE THE MASTER PASSWORD

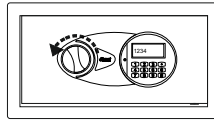
Existing master password is (123456).

Safe door must be in open position, press “#” button enter “0” twice then press reset button given behind the door. Enter your new master password (3-8 digits) and press “#” button to confirm, the screen show “IN”, which means the new master password has been changed successfully.

TO LOCK THE SAFE

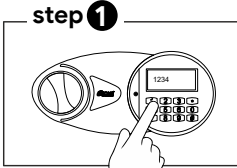


Close the door



Rotate the knob
Anti-clockwise and close
the safe

TO OPEN THE SAFE



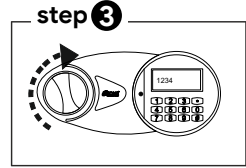
step 1

Press “#” Enter your
3-8 digits password



step 2

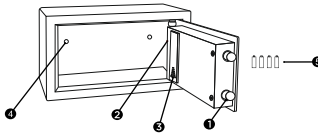
Press “#” Button



step 3

Rotate the Knob
clockwise and open the safe

1. Shooting Bolts
2. Reset Button
3. Battery Box
4. Mounting Hole
5. Batteries



PASSWORD HIDDEN OPTION

Before enter the password press “#” + “*” display will show “.....”.

Enter your password display will show “□□□□” then press “#” now your safe is open.

AUTO FREEZE MODE

After entering wrong password for three consecutive times, the system will go into auto freeze mode.

HOW TO CHECK THE OPENING RECORDS

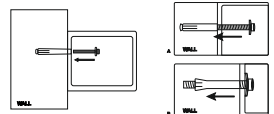
- 1) When LCD screen show “OPEN”, Press button “0” or “8” to check the open recording: go backward press “0”, to go advance press “8”:
- 2) Each opening record is shown on the two screens.
- 3) First the screen shows the type of the code (personal code or master code) and the number of opening records. the date of opening record is shown on the second screen:
- 4) During checking opening record, if you press green button (reset switch) at back of the door one time, the opening record is cleared, and LCD show “Clear”
- 5) Latest 58pcs of opening record can be checked in the system.

HOW TO CHANGE THE TIME AND DATE OF SYSTEM

- 1) In sleeping state, press button “*”, then begin to change the time and date of system. For example: 2016-11-03, Friday, 10:45 am, Please input the number 16 11 03 5 10 45 in turn, for year-month-day, Friday, and time.

INSTALLING THE SAFE

- Safe can be easily install in wardrobe or on wall.
- Fix the safe in the place which is not easy to move.
- Drill holes for expansion bolts (or clamping screws) in the right place.
- Turn the expansion bolts counter clockwise to separate.
- Use the expansion bolts (or clamping screws) to secure the case to the wall.
- Make sure the case is mounted in place as required and then tighten all screws.



Do's	Don'ts
1) On receipt of the safe, install it properly	1) Don't leave the safe in open position
2) Keep mechanical override key (Emergency Key) at a Safer place	2) Don't Share your password with anyone
3) Always reset the User & Master password after installation of the safe	3) Don't put any extra force on knob while opening or closing the safe

OZONE DIGITAL SAFE- CHECK LIST

MODEL NO.: _____ **SERIAL NO.:** _____

DATE: _____ **DATE OF DELIVERY:** _____

CONTENTS:-

- | | |
|--------------------------|--------------------------|
| 1. EMERGENCY KEY | <input type="checkbox"/> |
| 2. PANEL KEY | <input type="checkbox"/> |
| 3. DRAWER KEY | <input type="checkbox"/> |
| 4. BATTERIES | <input type="checkbox"/> |
| 5. ADAPTOR | <input type="checkbox"/> |
| 6. RFID CARD | <input type="checkbox"/> |
| 7. FASTNER | <input type="checkbox"/> |
| 8. MANUAL | <input type="checkbox"/> |
| 9. OPERATION CHECK | <input type="checkbox"/> |
| 10. BODY DAMAGE (IF ANY) | <input type="checkbox"/> |

INSPECTED BY :- _____

CUSTOMER / DEALER SIGNATURE & SEAL

**E-Mail : Info@ozonesecutech.com | Website: www.ozonesecutech.com
Customer Care: 9310012300**