

## OPERATING MANUAL SAFILO BIO SERIES



### FEATURES

Safilo Bio-X, 1 & 2  
Color- Black



Fingerprint



Password



LED Display



Emergency Key

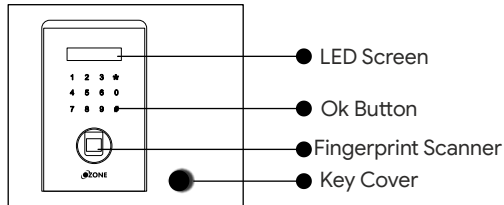


Auto Secure

Please scan the QR code for reference video

## OPERATING INSTRUCTIONS FOR SAFILO BIO SAFES

Ozone Safilo Bio safe is designed to help you protect your valuables against theft. Please install the safe in a cupboard or on a wall/floor and keep the emergency key in a safe place. Keep the safe in a secret place for paramount security.



### Accessories Include:

- 1) 2 Keys
- 2) 4 Mounting Bolts
- 3) 4x1.5 Voltage AA Batteries
- 4) Floor Carpet
- 5) Power Supply Adaptor
- 6) Warranty Card

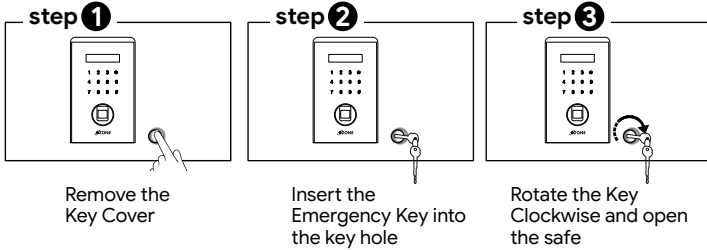
### Specifications:

| Model        | External Size (HxWxD)mm | Weight (Kg.) | Volume (Ltr.) |
|--------------|-------------------------|--------------|---------------|
| Safilo Bio-x | 350x400x350             | 21.3         | 40.8          |
| Safilo Bio-1 | 420x350x360             | 20.4         | 40            |
| Safilo Bio-2 | 555x350x360             | 24.7         | 55            |

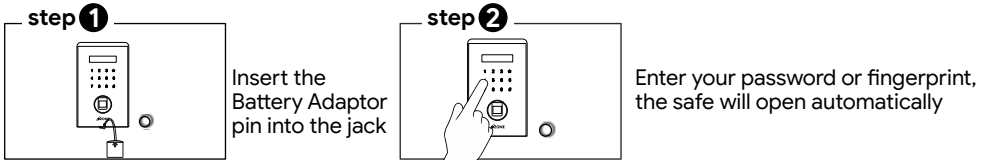
**NOTE:** 1) Kindly change the User Password and Fingerprint before operating the Digital Safe.  
2) Please do not keep the Emergency Keys inside the safe!.

# HOW TO OPEN A SAFE FOR THE FIRST TIME

## 1. OPEN THE SAFE USING THE EMERGENCY KEY



## 2. BY USING EXTERNAL BATTERY ADAPTOR

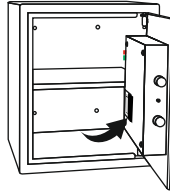


# INSTALLING THE BATTERIES

Open the safe door, remove the battery case cover and insert new AA batteries (4x1.5V) according to '+' '-' polarity.

**Low Battery Indication** - If the red indication blinks in that condition we need to change the batteries.

**NOTE:** In case of battery drain, please replace all the existing batteries with new ones.



# HOW TO CHANGE THE PASSWORD

Existing password is (1234).

The safe door must be in open position, Press the reset "RED" button given behind the door. Enter your new password (3-8 digits) and press "#" button display will show (done) means your password has been changed successfully.

# HOW TO SET THE FINGERPRINT

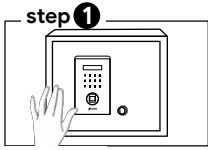
The safe door must be in open position, press the reset "GREEN" button available on the behind the door. A short beep will be heard & LED screen will display "FINGER".

Please input your fingerprint on the window until the device beeps. LED will display "AGAIN". Now repeat the same process.

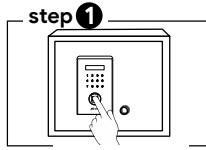
LED screen will display "DONE 01", the fingerprint is now registered successfully.

**NOTE:** You can register upto 29 fingerprints.

## TO LOCK THE SAFE

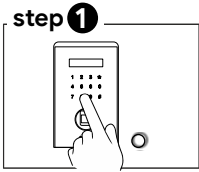


step 1  
Close the door  
and hold it

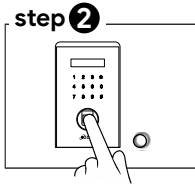


step 1  
Input your fingerprint or press "#"  
button,  
the door will be closed automatically

## TO OPEN THE SAFE



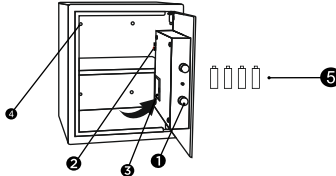
step 1  
Enter your 3-8 digits  
password than press "#"



step 2  
Input your fingerprint on the  
fingerprint scanner, the door  
will open automatically

**NOTE:** If you want to hide the password, please press "\*" before entering the password

1. Shooting Bolts
2. Reset Button
3. Battery Box
4. Mounting Hole
5. Batteries



## HOW TO SET FINGER & PASSWORD

The safe door must be in open position, press the reset "RED" button provided on behind of the door for 3 seconds. The LED screen "F"-ND-"C" The customer can either can use password and fingerprint using this mode

## HOW TO SET FINGER OR PASSWORD

The safe door must be in open position, press the reset "RED" button provided on behind of the door for 3 seconds. The LED screen "F"-OR-"C" The customer can either can use password and fingerprint using this mode

## INSTALLING THE SAFE

Safe can be easily install in wardrobe or on wall.

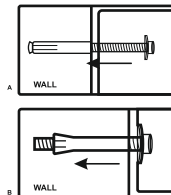
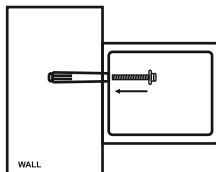
Fix the safe in the place which is not easy to move.

Drill holes for expansion bolts (or clamping screws)in the right place.

Turn the expansion bolts counter clockwise to separate.

Use the expansion bolts (or clamping screws) to secure the case to the wall.

Make sure the case is mounted in place as required and then tighten all screws.



| Do's   | Don'ts  |
|--|---|
| 1) On receipt of the safe, install it properly                                 | 1) Don't leave the safe in open position                                    |
| 2) Keep mechanical override key (Emergency Key) at a Safer place               | 2) Don't Share your password with anyone                                    |
| 3) Always reset the User Password & Fingerprint after installation of the safe | 3) Do not apply any extra force on the keys on opening and closing the door |

## **OZONE DIGITAL SAFE- CHECK LIST**

**MODEL NO.:** \_\_\_\_\_ **SERIAL NO.:** \_\_\_\_\_

**DATE:** \_\_\_\_\_ **DATE OF DELIVERY:** \_\_\_\_\_

### **CONTENTS:-**

- |                          |                          |
|--------------------------|--------------------------|
| 1. EMERGENCY KEY         | <input type="checkbox"/> |
| 2. PANEL KEY             | <input type="checkbox"/> |
| 3. DRAWER KEY            | <input type="checkbox"/> |
| 4. BATTERIES             | <input type="checkbox"/> |
| 5. ADAPTOR               | <input type="checkbox"/> |
| 6. RFID CARD             | <input type="checkbox"/> |
| 7. FASTNER               | <input type="checkbox"/> |
| 8. MANUAL                | <input type="checkbox"/> |
| 9. OPERATION CHECK       | <input type="checkbox"/> |
| 10. BODY DAMAGE (IF ANY) | <input type="checkbox"/> |

---

**INSPECTED BY :-** \_\_\_\_\_

CUSTOMER / DEALER SIGNATURE & SEAL

**E-Mail : [Info@ozonesecutech.com](mailto:Info@ozonesecutech.com) | Website: [www.ozonesecutech.com](http://www.ozonesecutech.com)  
Customer Care: 9310012300**