

OPERATING MANUAL BAS-SERIES



FEATURES

BAS- i10,i20 & Nxt
Color- Black/Ivory


Password

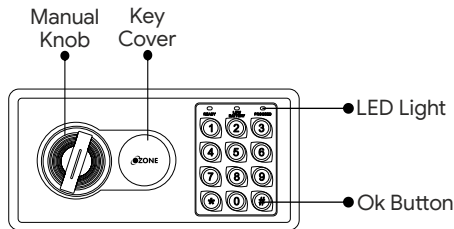

Auto Freeze


Emergency Key

Please scan the QR code
for reference video

OPERATING INSTRUCTIONS FOR BAS SAFES

Ozone Bas safe is designed to help you protect your valuables against theft. Please install the safe in a cupboard or on a wall/floor and keep the emergency key in a safe place. Keep the safe in a secret place for paramount security.



Accessories Include:

- 1) 2 Keys
- 2) Mounting Bolts
- 3) 4x1.5V AA Batteries
- 4) Floor Carpet
- 5) Manual/Warranty Card

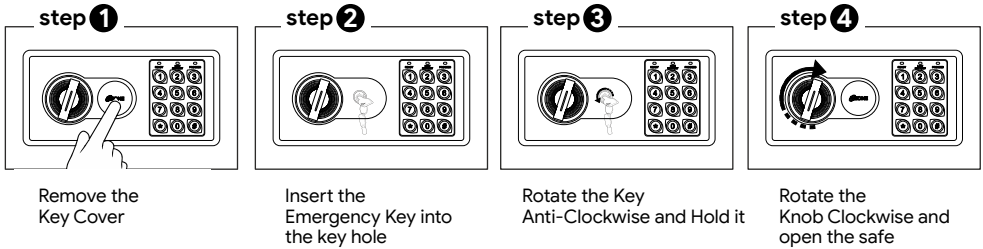
Specifications:

Model	External Size (HxWxD)mm	Weight (Kg.)	Volume (Ltr.)
OES-BAS-i10	200x300x200	5.9	7.8
OES-BAS-i20	250x350x250	9	16.11
OES-BAS-NXT	250x350x250	9.5	16.11

NOTE: 1) Kindly change the User Password before operating the Digital Safe.
2) Please do not keep the Emergency Keys inside the safe!

HOW TO OPEN A SAFE FOR THE FIRST TIME

OPEN THE SAFE USING THE EMERGENCY KEY

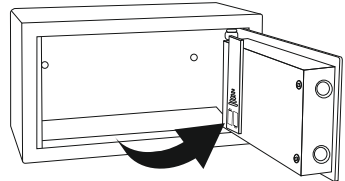


INSTALLING THE BATTERIES

Open the safe door, remove the battery case cover and insert new AA batteries (4x1.5V) according to '+' '-' polarity.

Low Battery Indication - If the red indication blinks in that condition we need to change the batteries.

NOTE: In case of battery drain, please replace all the existing batteries with new ones.



HOW TO CHANGE THE PASSWORD

Existing user password is (1234).

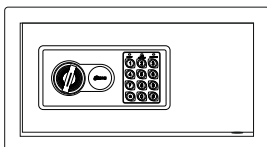
a) The safe door must be in open position.

b) Press the reset button (given inside of the door), the buzzer will beep twice.

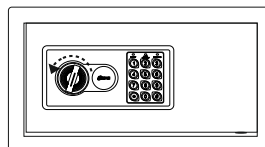
c) Enter your new user password (3-8 digits) and press “#” button to confirm, the buzzer will beep twice and yellow indicator goes out, now the user password is changed successfully.

Note:-If the yellow beeps flashes along with 3 buzzer beeps, then it indicates that code registration has been ineffective and you need to try again.

TO LOCK THE SAFE

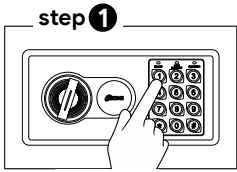


Close the door

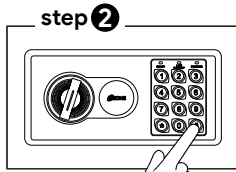


Rotate the knob Anti-clockwise and close the door

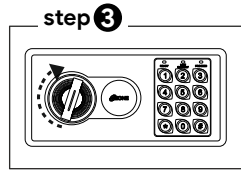
TO OPEN THE SAFE



step 1
Enter your 3-8 digits password

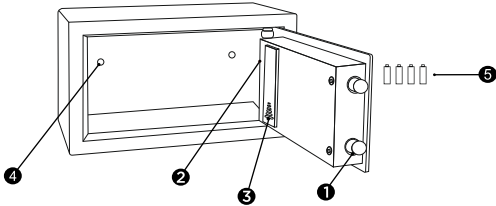


step 2
Press “#” Button



step 3
Rotate the Knob clockwise and open the safe

1. Shooting Bolts
2. Reset Button
3. Battery Box
4. Mounting Hole
5. Batteries



INSTALLING THE SAFE

Safe can be easily install in wardrobe or on wall.

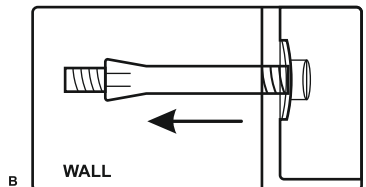
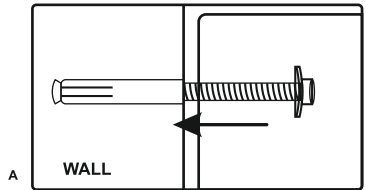
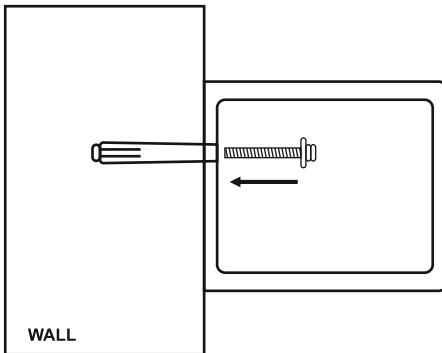
Fix the safe in the place which is not easy to move.

Drill holes for expansion bolts (or clamping screws)in the right place.

Turn the expansion bolts counter clockwise to separate.

Use the expansion bolts (or clamping screws) to secure the case to the wall.

Make sure the case is mounted in place as required and then tighten all screws.



Do's	Don'ts
1) On receipt of the safe, install it properly	1) Don't leave the safe in open position
2) Keep mechanical override key (Emergency Key) at a Safer place	2) Don't Share your password with anyone
3) Always reset the User password after installation of the safe	3) Don't put any extra force on knob while opening or closing the safe

OZONE DIGITAL SAFE- CHECK LIST

MODEL NO.: _____ **SERIAL NO.:** _____

DATE: _____ **DATE OF DELIVERY:** _____

CONTENTS:-

- | | |
|--------------------------|--------------------------|
| 1. EMERGENCY KEY | <input type="checkbox"/> |
| 2. PANEL KEY | <input type="checkbox"/> |
| 3. DRAWER KEY | <input type="checkbox"/> |
| 4. BATTERIES | <input type="checkbox"/> |
| 5. ADAPTOR | <input type="checkbox"/> |
| 6. RFID CARD | <input type="checkbox"/> |
| 7. FASTNER | <input type="checkbox"/> |
| 8. MANUAL | <input type="checkbox"/> |
| 9. OPERATION CHECK | <input type="checkbox"/> |
| 10. BODY DAMAGE (IF ANY) | <input type="checkbox"/> |

INSPECTED BY :- _____

CUSTOMER / DEALER SIGNATURE & SEAL

**E-Mail : Info@ozonesecutech.com | Website: www.ozonesecutech.com
Customer Care: 9310012300**