

OPERATING MANUAL ACURA SAFE SERIES

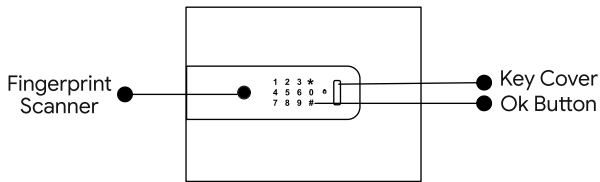


Acura-11 Life & 22 Life
Color- Black

- Fingerprint
- Password
- Mobile App
- Emergency Key
- Touch Screen Panel

OPERATING INSTRUCTIONS FOR ACURA SAFES

Ozone Acura safe is designed to help you protect your valuables against theft. Please install the safe in a cupboard or on a wall/floor and keep the emergency key in a safe place. Keep the safe in a secret place for paramount security.



Accessories Include:

- 1) 2 Keys
- 2) 4 Mounting Bolts
- 3) 4x1.5 Voltage AA Batteries
- 4) Power Supply Adaptor
- 5) Warranty Card

Specifications:

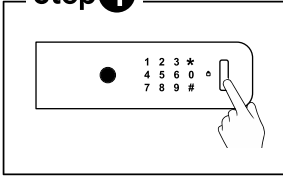
Model	External Size (HxWxD)mm	Weight (Kg.)	Volume (Ltr.)
Acura - 11 Life	300x380x300	13	30
Acura - 22 Life	450x380x320	18	45

NOTE: 1) Kindly change the User, Master password and fingerprint before operating the Smart Safe.
2) Please do not keep the Emergency Keys inside the safe!

HOW TO OPEN A SAFE FOR THE FIRST TIME

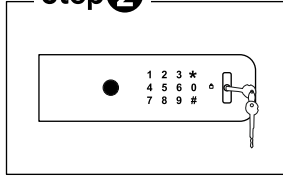
1. OPEN THE SAFE USING THE EMERGENCY KEY

Step 1



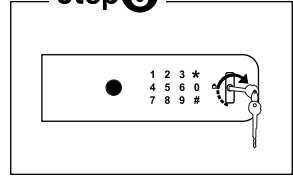
Remove the Key Cover

Step 2



Insert the Emergency Key into the key hole

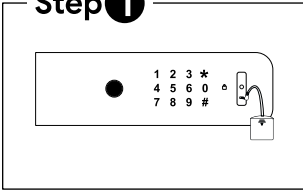
Step 3



Rotate the Key Anti-Clockwise and open the safe

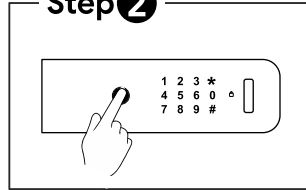
2. BY USING EXTERNAL BATTERY ADAPTOR

Step 1



Remove the key cover and Insert the Battery Adaptor pin into the jack

Step 2



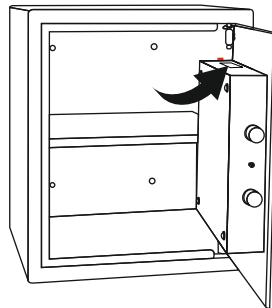
Unlock using password or fingerprint, The safe will open automatically

INSTALLING THE BATTERIES

Open the safe door, remove the battery case cover and insert new AA batteries (4x1.5V) according to '+' '-' polarity.

Low Battery Indication - If the red indication blinks in that condition we need to change the batteries.

NOTE: In case of battery drain, please replace all the existing batteries with new ones.



HOW TO CHANGE THE USER PASSWORD

Existing User Password - 1234

The safe door must be in the open position. Touch the wake-up screen, press 11, then press the reset button available inside the safe, enter your new user password (3–12 digits), and press "#." The user password has been changed successfully.

HOW TO CHANGE THE MASTER PASSWORD

Existing Master Password - 123456.

The safe door must be in the open position. Touch the wake-up screen, press "0" twice, then press the reset button available inside the safe, then enter your new master password (3–12 digits) and press "#." The master password has been changed successfully.

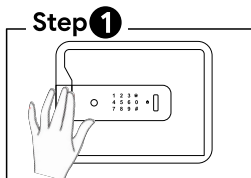
HOW TO SET THE FINGERPRINT

The safe door must be in the open position. Press the "Reset" button available on the back of the door, and hear the fingerprint light flashing on the screen when you hear two beeps.

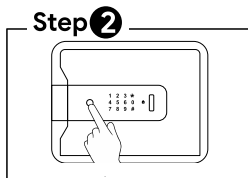
Please input your fingerprint four times at the collector position and then hear a long beep sound with two beeps, which means the fingerprint is now successfully registered.

NOTE: You can register up to 30 fingerprints.

TO LOCK THE SAFE

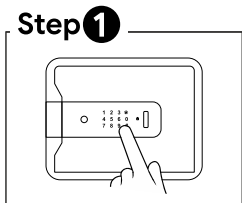


Close the door and hold it

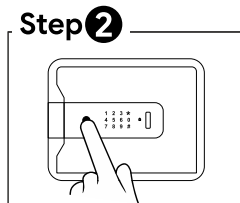


The safe door is closed automatically

TO OPEN THE SAFE



Enter your 3-12 digits password than press "#"



Input your fingerprint on the fingerprint scanner, the door will open automatically

MOBILE APP CONFIGURATION

- 1) Search for "Ozolife" in the app store or play store.
- 2)- Register by mobile phone number / email id then log in.
- 3)- Find the "Ozolife." App the "Smart Safe" or Smart Safe (WI-FI) and follow the instructions to finish adding the safe.
- 4)- Net connecting
- 5)- Entering the WI-FI setting Manu (WI-FI name and password)
- 6)- Touch the screen and enter 22; press the reset buttons available on the back of the door; and hold 15 seconds to connect successfully. If you fail, operate again.

HOW TO OPEN THE SAFE BY APP

- 1) Open the Ozolife app and click "Smart Safe."
- 2) Press the "Lock icon" and press to confirm.
- 3) The safe opens automatically.
- 4) If you are not at home, is the safe secure? We have an auto-alarm function to resolve this danger. When the safe is strongly shaken and crashes, it will be noisy, and the app will also receive an alarm-reminding message. If you use the correct fingerprint or password to open the safe door, the alarm noise will stop.
- 5) An opening Safely receive an open-door message from the app. Press password many times or wrong fingerprint, receive reminding message from app.

HOW TO REMOTE UNLOCK SAFE BY APP

Press 00#, you will get a notification of remote unlock in "Ozolife" App, white and yellow letters will appear: "Click to remote open lock," the safe will open, and, after opening the safe, you will get an open door message from the app. will receive. Press password multiple times or wrong fingerprint, get reminder message from the app.

REMARKS

Make sure the route is a single-frequency signal; if it is a double-frequency router, set the router to 2.4 GHz first. Make sure the device is under a Wi-Fi signal and the distance between the safe box and router is as close as possible.

Under the new network environment, delete the device and reconfigure the network. The black wireless module is easily broken; please carefully put it down.

OTHER FUNCTION

- 1) Remind box name and delete device.
- 2) Display battery volume.
- 3) Lock sign.
- 4) Display the last message.
- 5) Alarm remind and record.
- 6) Family member management.
- 7) All open door recording8)- Other functions.

NOTE:

If you enter the wrong fingerprint five times and the wrong password three times, the error alarm function will be triggered for 30 seconds. Please enter the correct fingerprint or password to clear the alarm.

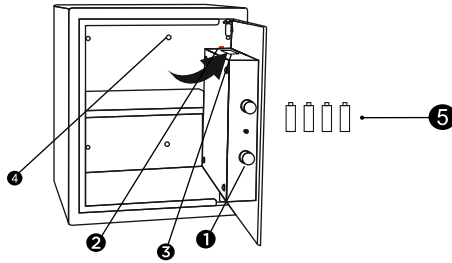
Factory reset: Press reset button 5 seconds.

Alarm activated: five-time wrong fingerprint and three-time incorrect password, then alarm function for 30 seconds.

Important note: In order to improve the accuracy of fingerprint recognition, users can refer to the following suggestions:

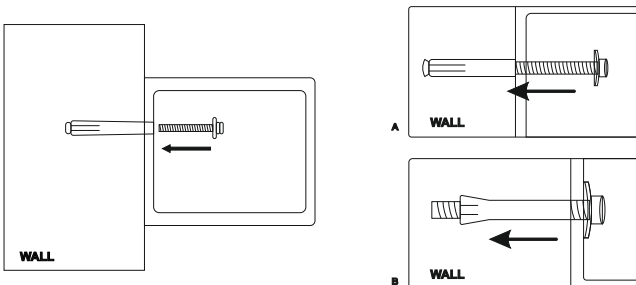
- 1) It is recommended that each user register 2-3.
- 2) It is recommended that women and children register their thumbs and middle fingers as far as possible.
- 3) Press the strength of the finger as much as possible. If the force is too heavy or too light, it is recommended to press the finger with a light force.
- 4) It is recommended to register fingerprints from multiple.
- 5) In the selection of batteries, it is recommended to use high-quality ones. high-performance alkaline batteries, do not use inferior or counterfeit batteries, and do not use any carbon batteries.

1. Shooting Bolts
2. Reset Button
3. Battery Box
4. Mounting Hole
5. Batteries



INSTALLING THE SAFE

- Check the type of location where the safe will be installed (wood, concrete, tiles)
- Get the appropriate anchors for the type of location
- Check location on floor for concealed wires or pipes
- Mark the location to drill for your anchor
- Drill the appropriate size hole for the anchors you have
- Mount the safe, making sure it is secure
- **DO NOT** mount to a shelf in a cabinet or closet without anchoring to wall behind the safe







Do's	Don'ts
1) Check the area before installing the safe	1) Do not install the safe in moiser area
2) While installing the battery, make sure all the batteries are new and are of branded company.	2) While installing new batteries, make sure old and new batteries are not mixed
3) Keep the emergency key in a secured place	3) Do not keep the emergency key inside the safe

CHECK LIST

MODEL NO.: _____ **SERIAL NO.:** _____

DATE: _____ **DATE OF DELIVERY:** _____

CONTENTS:-

- | | |
|--------------------------|--------------------------|
| 1. EMERGENCY KEY | <input type="checkbox"/> |
| 2. PANEL KEY | <input type="checkbox"/> |
| 3. DRAWER KEY | <input type="checkbox"/> |
| 4. BATTERIES | <input type="checkbox"/> |
| 5. ADAPTOR | <input type="checkbox"/> |
| 6. RFID CARD | <input type="checkbox"/> |
| 7. FASTNER | <input type="checkbox"/> |
| 8. MANUAL | <input type="checkbox"/> |
| 9. OPERATION CHECK | <input type="checkbox"/> |
| 10. BODY DAMAGE (IF ANY) | <input type="checkbox"/> |

INSPECTED BY :- _____

CUSTOMER / DEALER SIGNATURE & SEAL

E-Mail : Info@ozonesecutech.com | **Website:** www.ozonesecutech.com
Customer Care: 9310012300